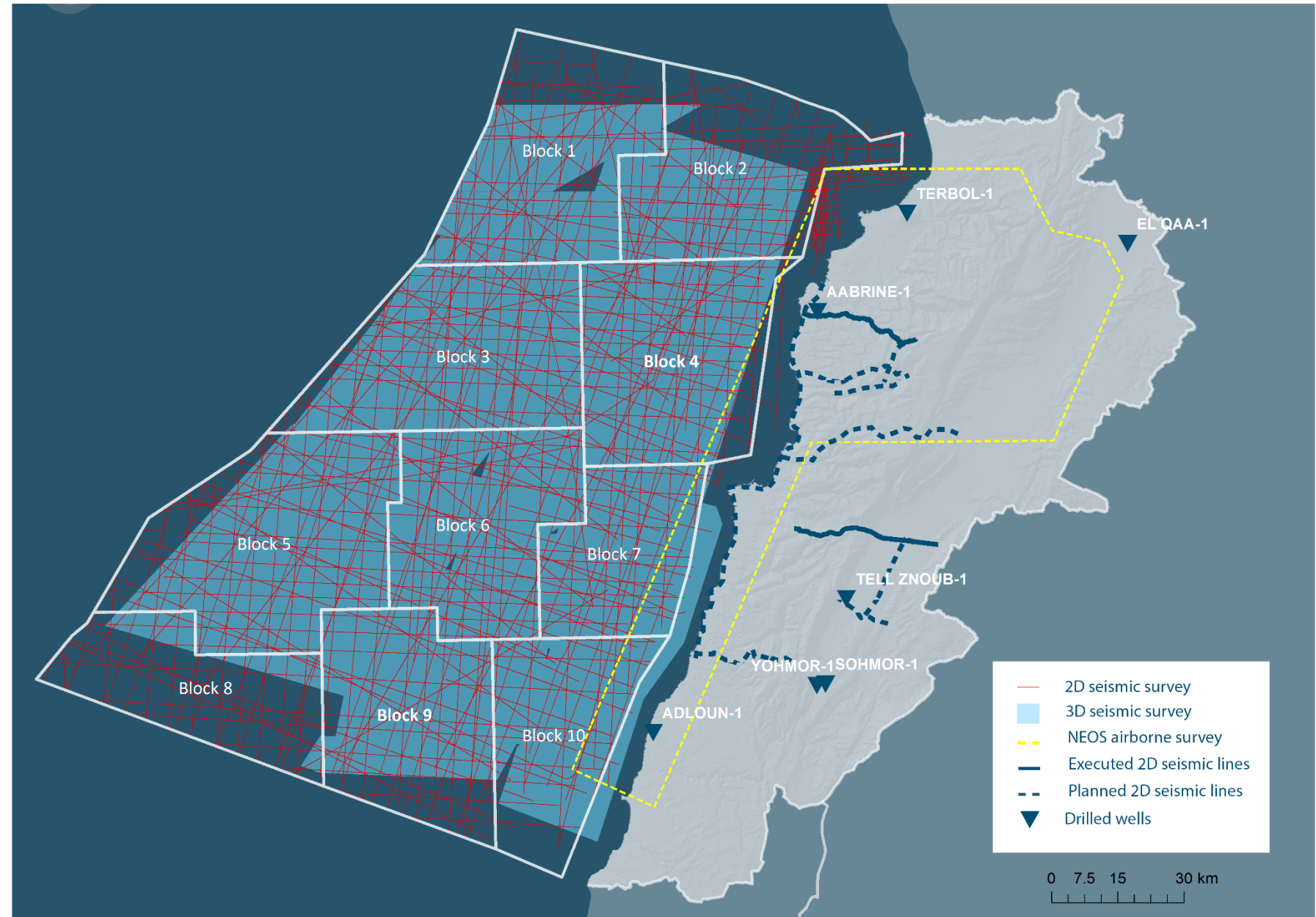


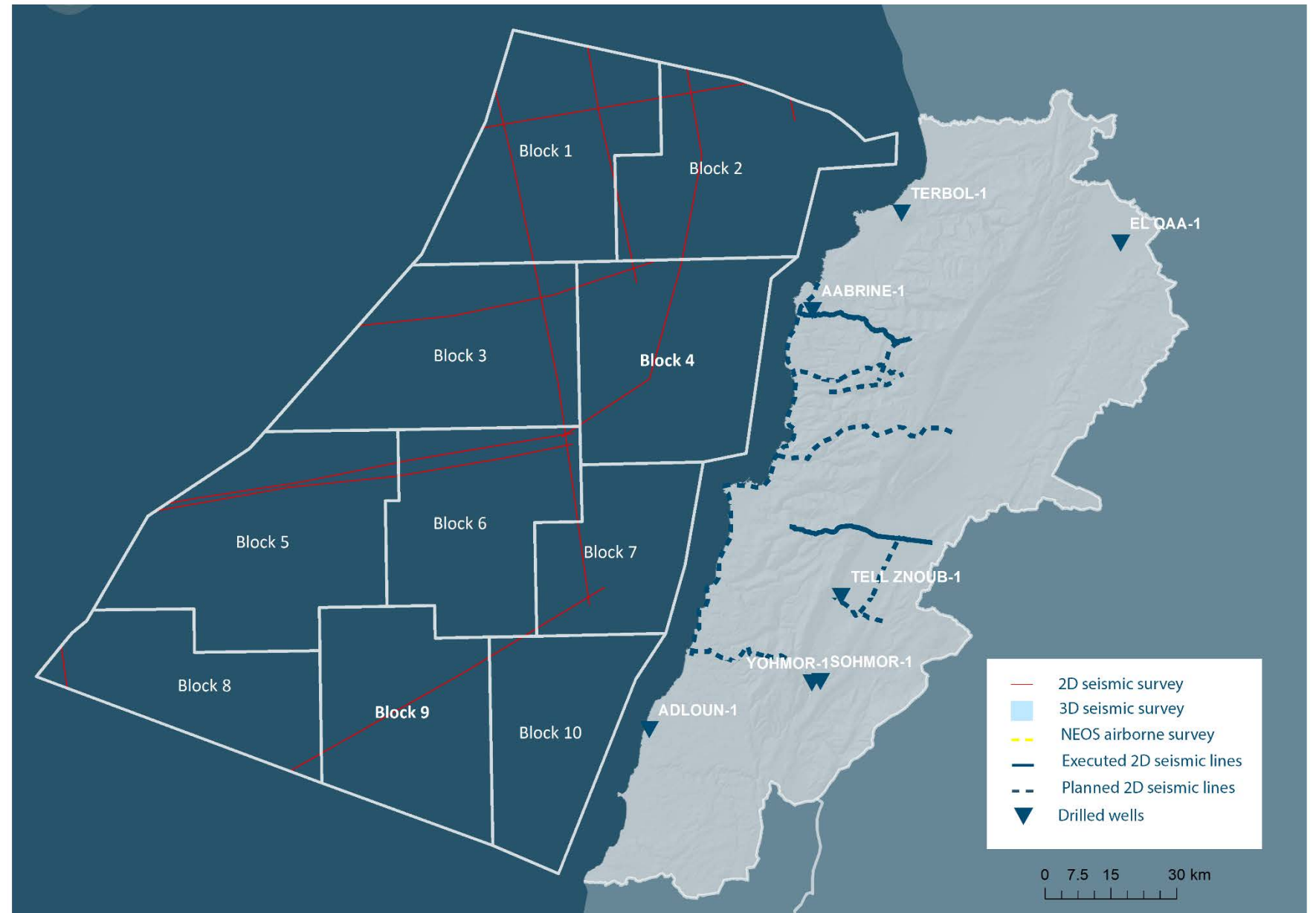
AVAILABLE GEOPHYSICAL SURVEYS FOR VIEWING AT THE DATA ROOM

[Click on the survey for more info](#)

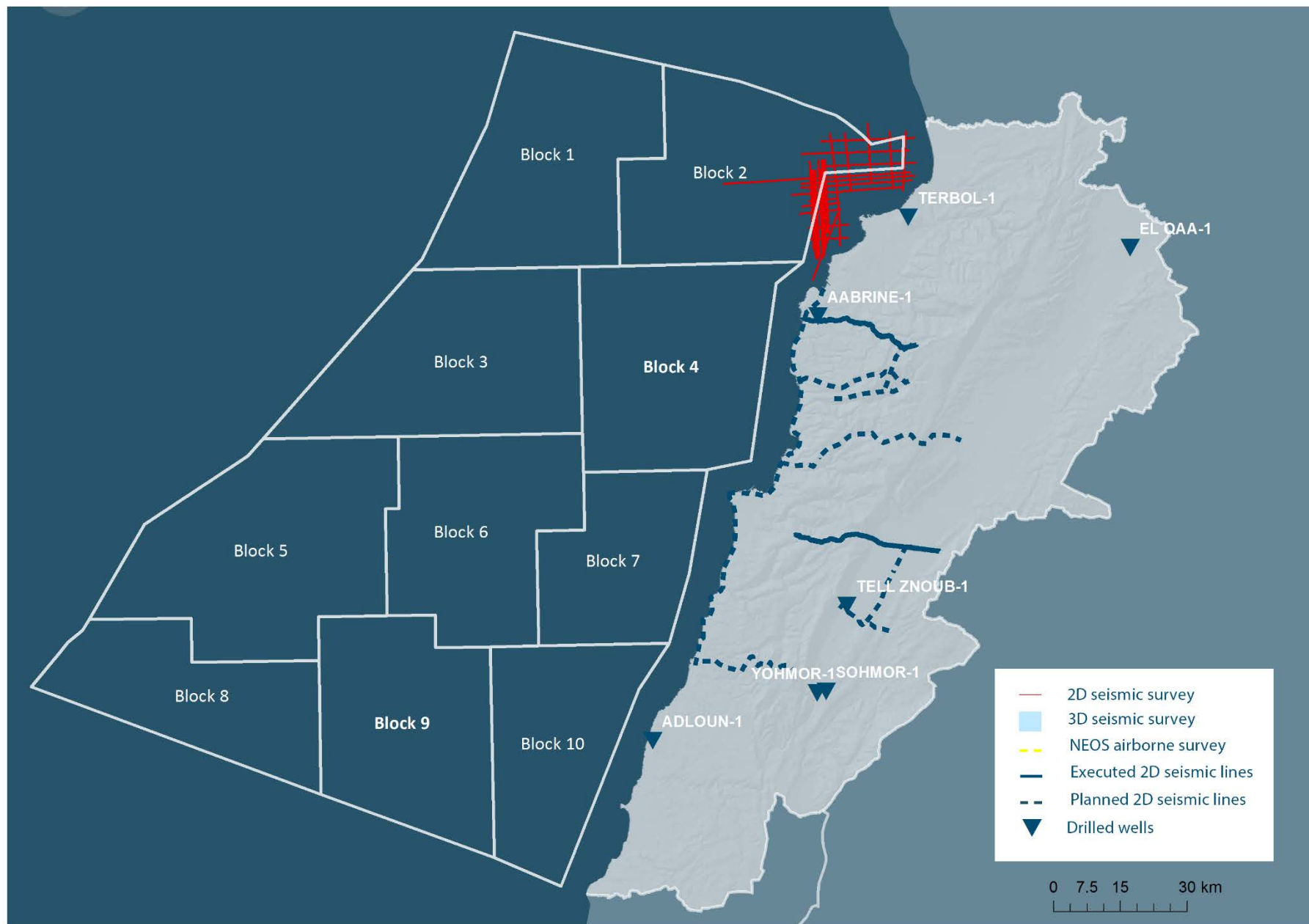
1975	Spectrum	2D	689.4 km
1993	Geco-Prakla	2D	508.2 km
2000	Spectrum	2D	2,486.5 km
2002	Spectrum	2D	1,996.1 km
2002	LPA	2D	3,181.1 km
2006	PGS	3D	1,516.3 km ²
2007	PGS	3D	681.7 km ²
2008	PGS	2D	4,885.8 km
2011	PGS	2D	3,751.8 km
2011	PGS	3D	1,364.5 km ²
2012	PGS	3D	3,864.8 km ²
2013	PGS	3D	2,466.6 km ²
2013	Spectrum	3D	5,330.2 km ²
2014	Airborne	Airborne	6,000 km ²



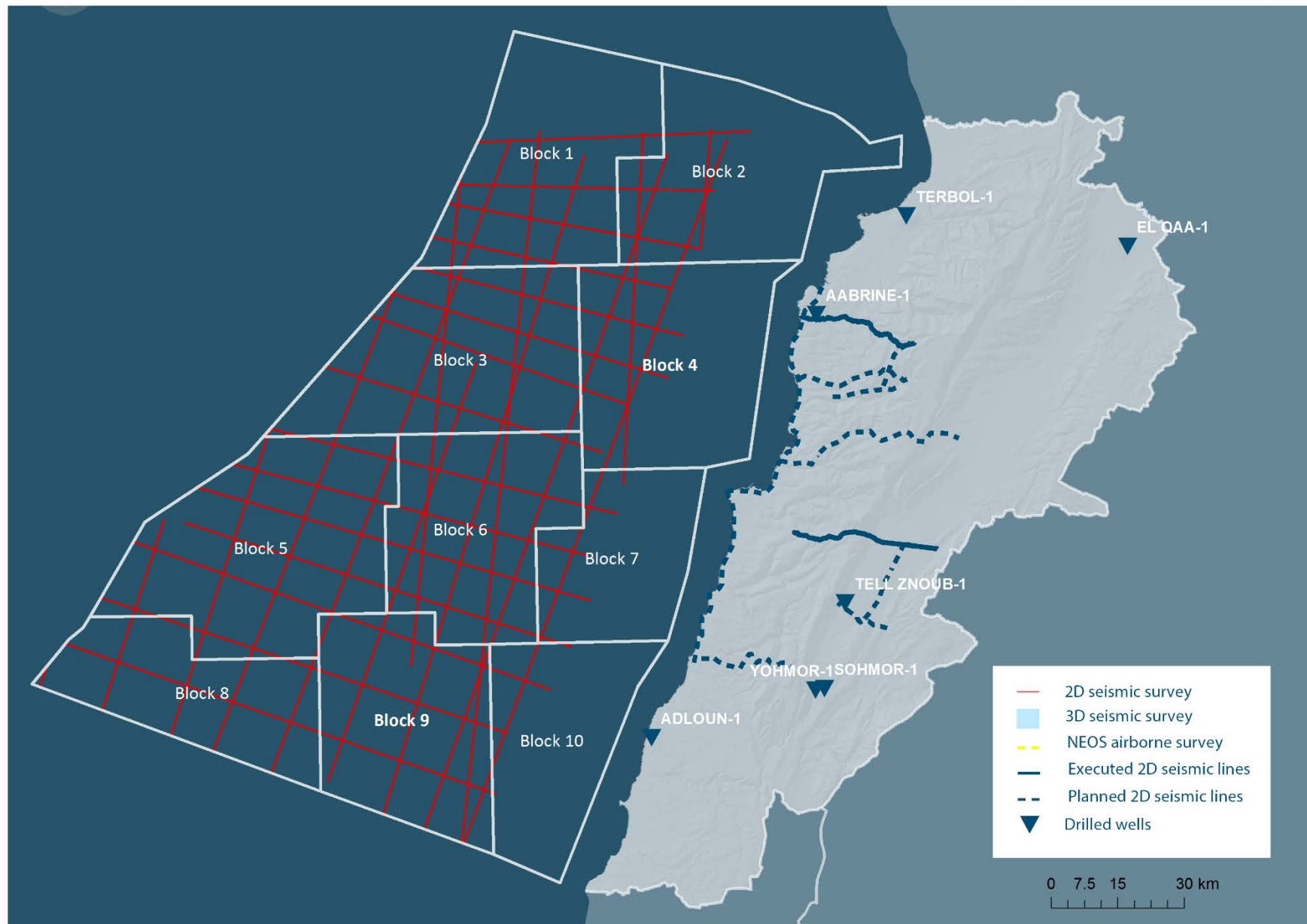
Spectrum 2D seismic surveys – 1975 (689.4 km)



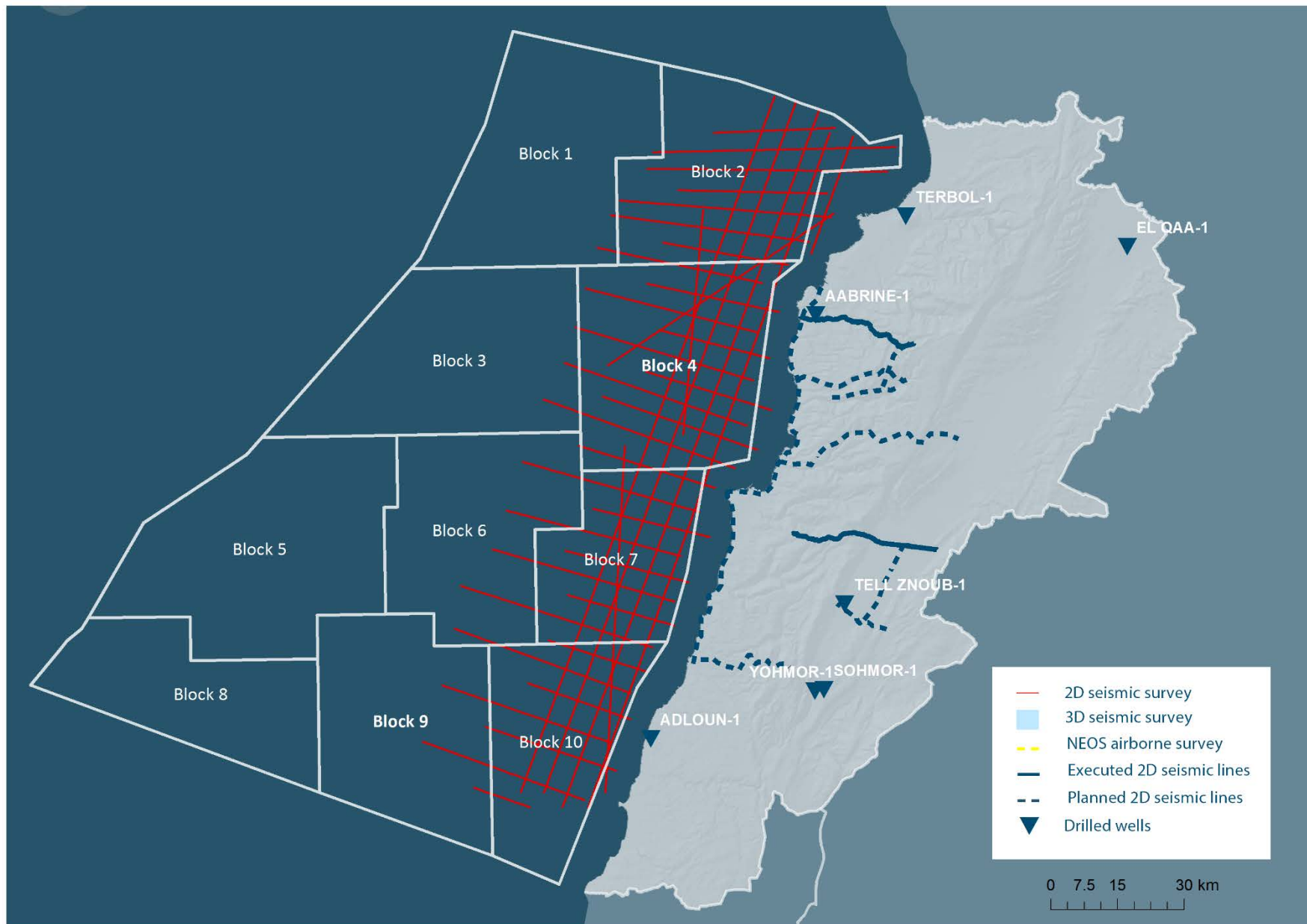
Geco Prakla 2D seismic surveys – 1993 (508.2 km) Reprocessed



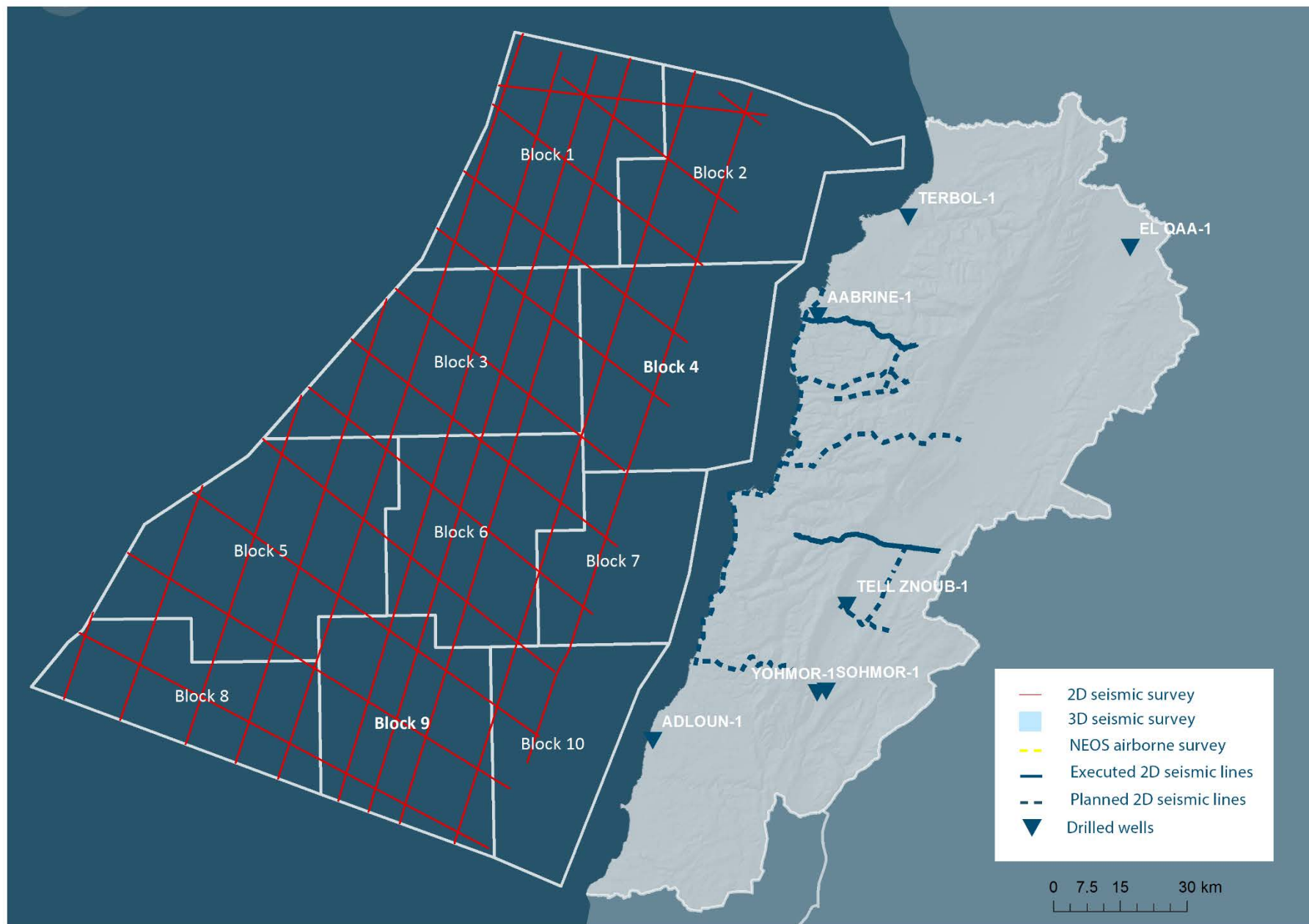
Spectrum 2D seismic surveys – 2000 (2,486.5 km)



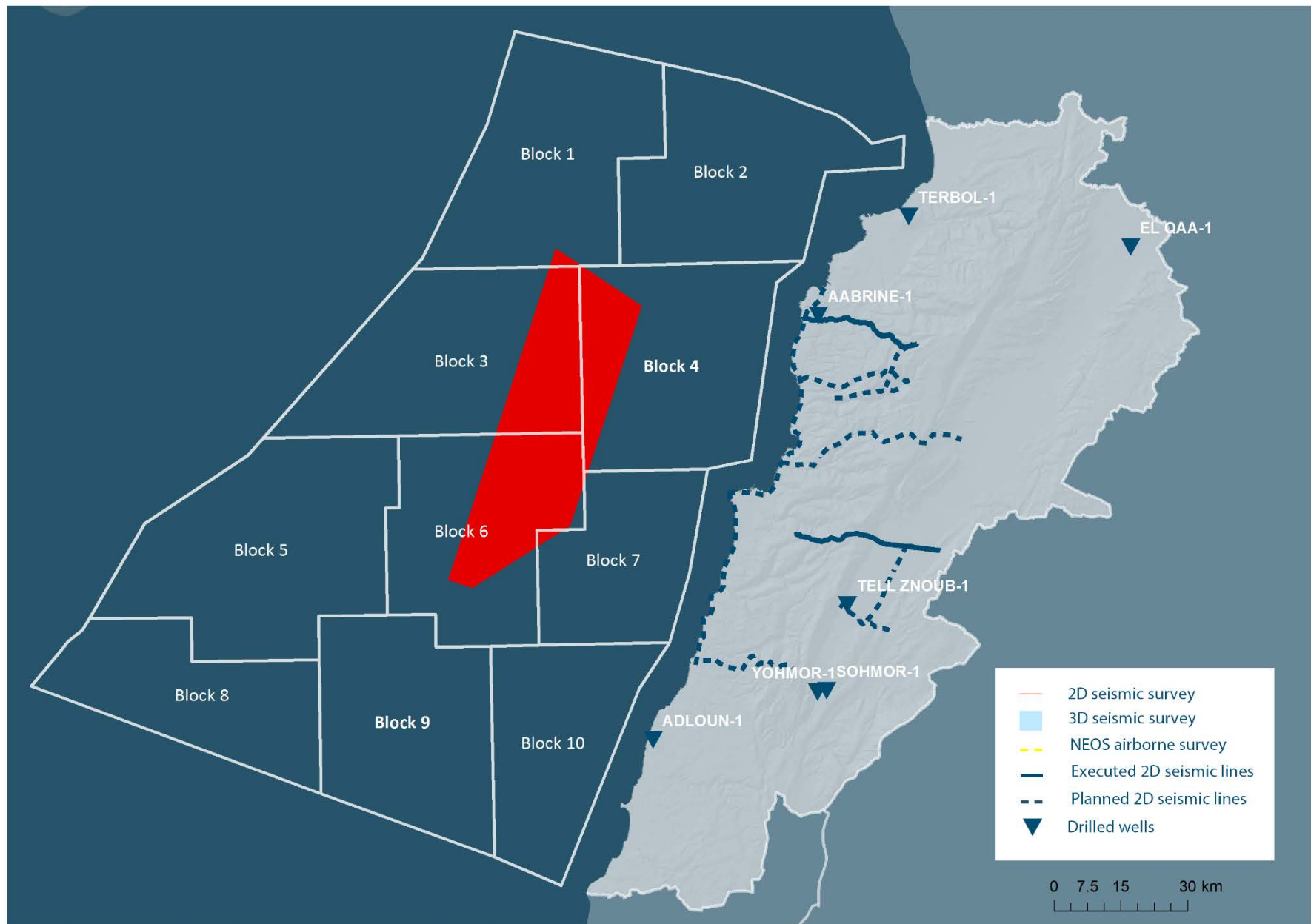
Spetrum 2D seismic surveys – 2002 (1,996.1 km)



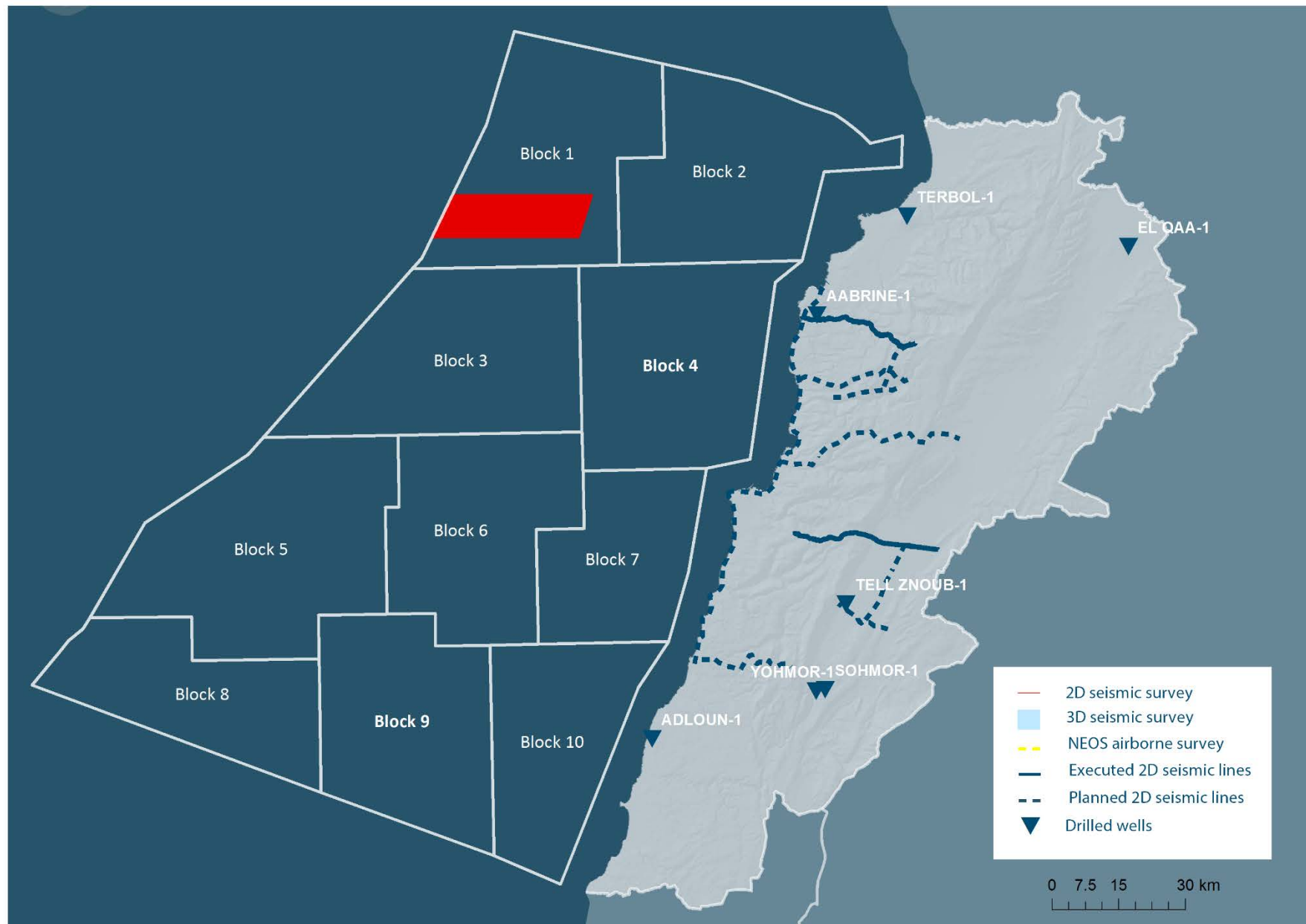
LPA 2D seismic surveys – 2002 (3,181.1 km)



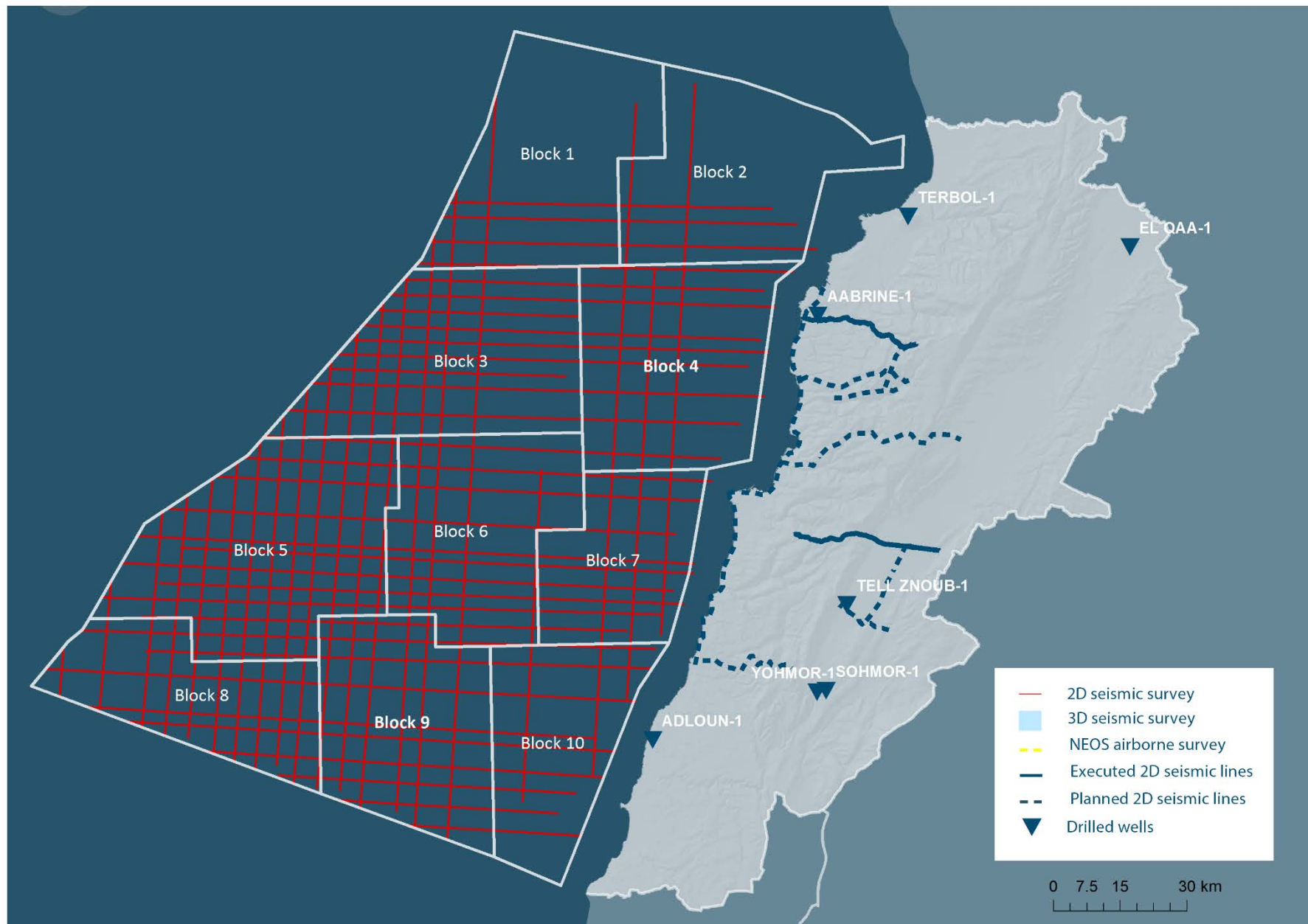
PGS 3D seismic survey – 2006 (1,516.3 km²)



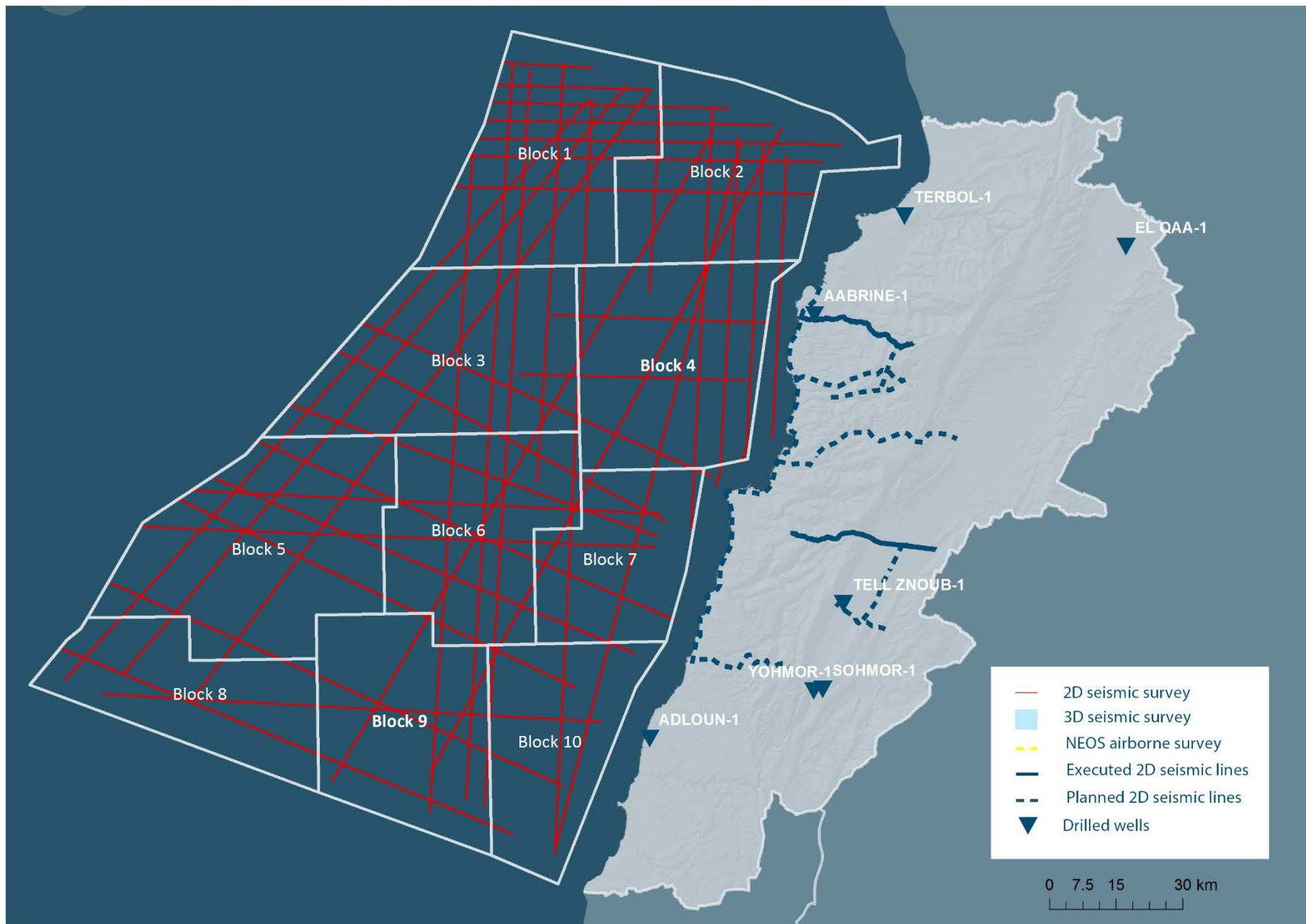
PGS 3D seismic survey – 2007 (681.7 km²)



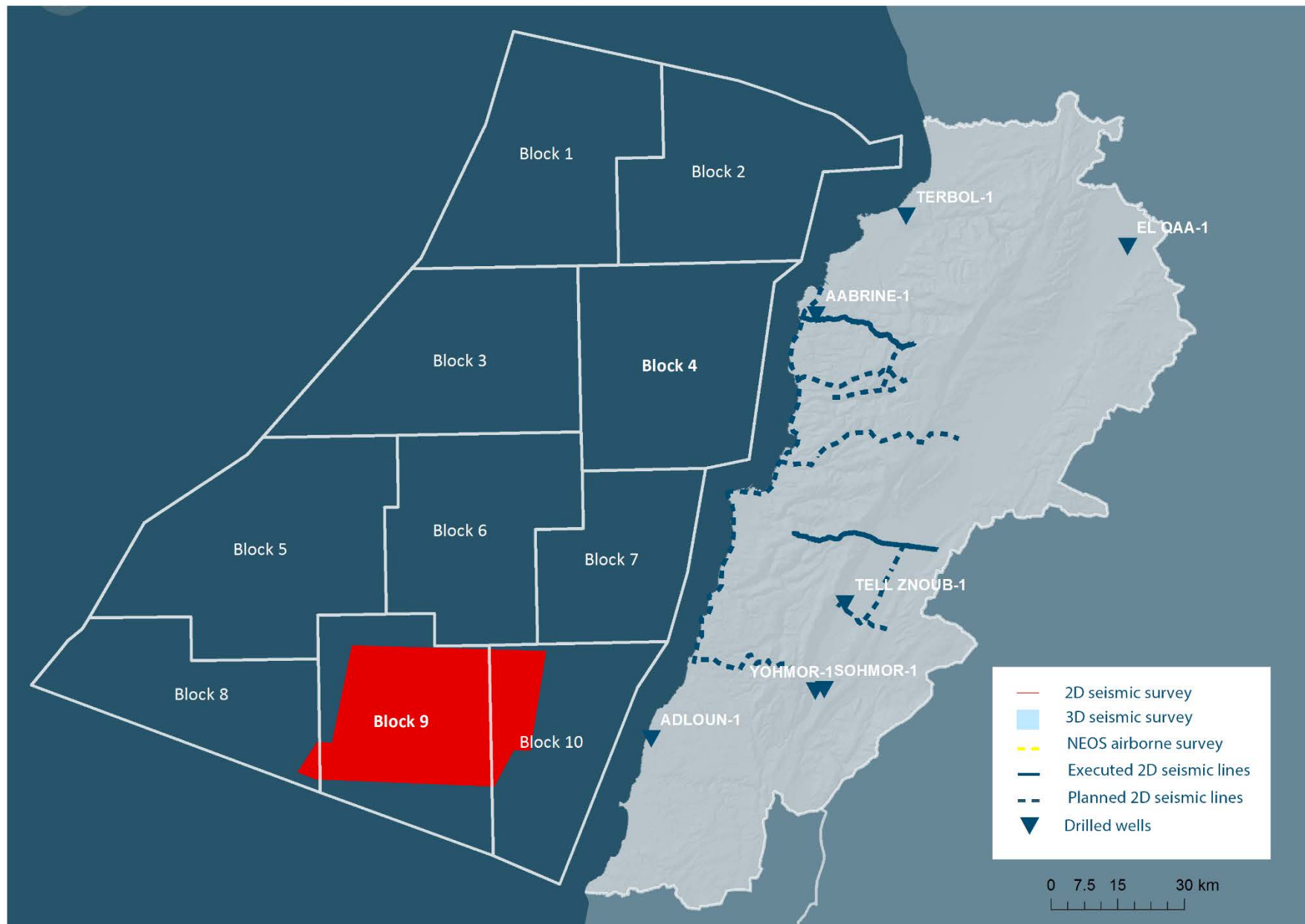
PGS 2D seismic surveys –
2008 (4,885.8 km)
Reprocessed



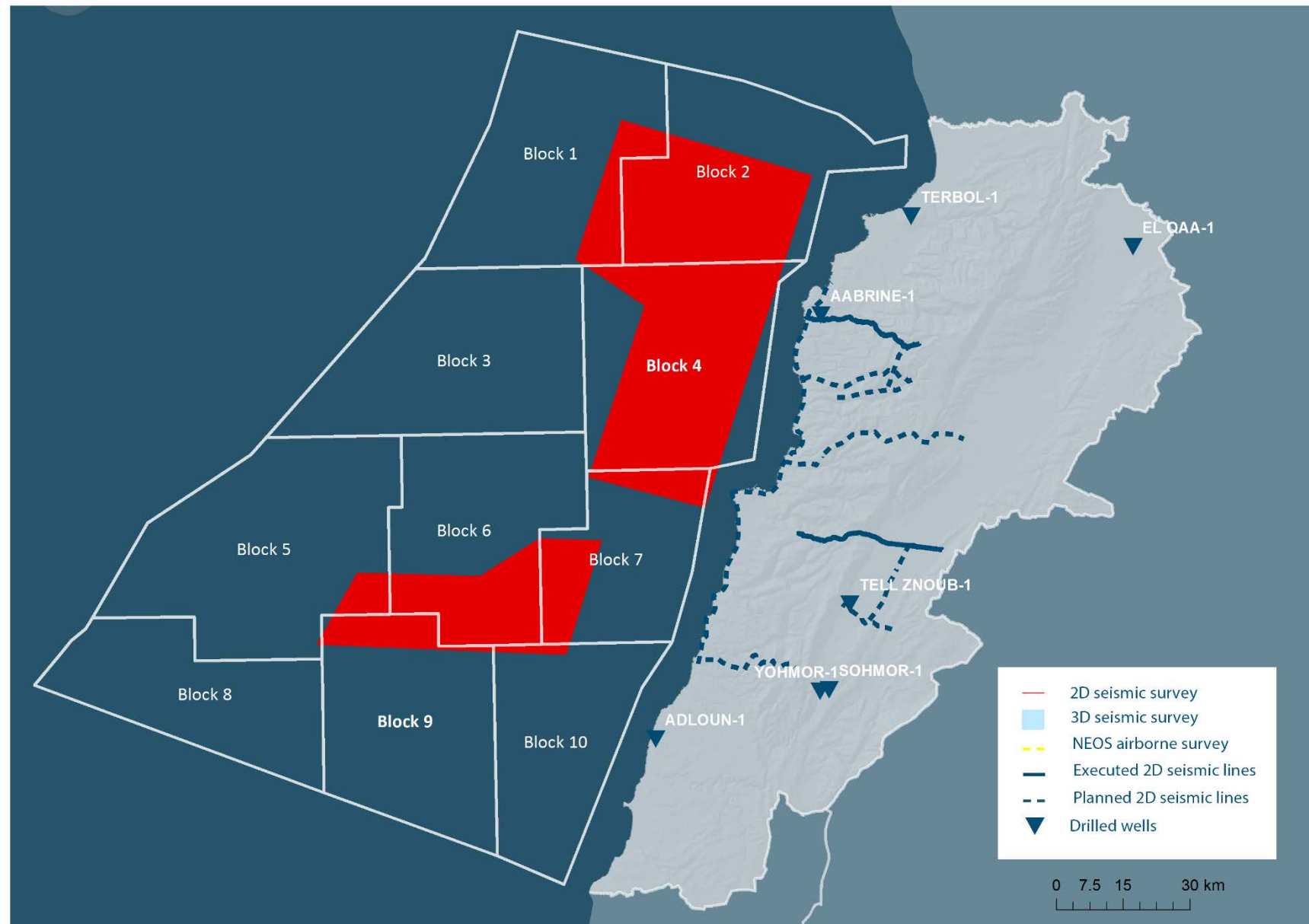
PGS 2D seismic surveys –
2011 (3,751.8 km)
Reprocessed



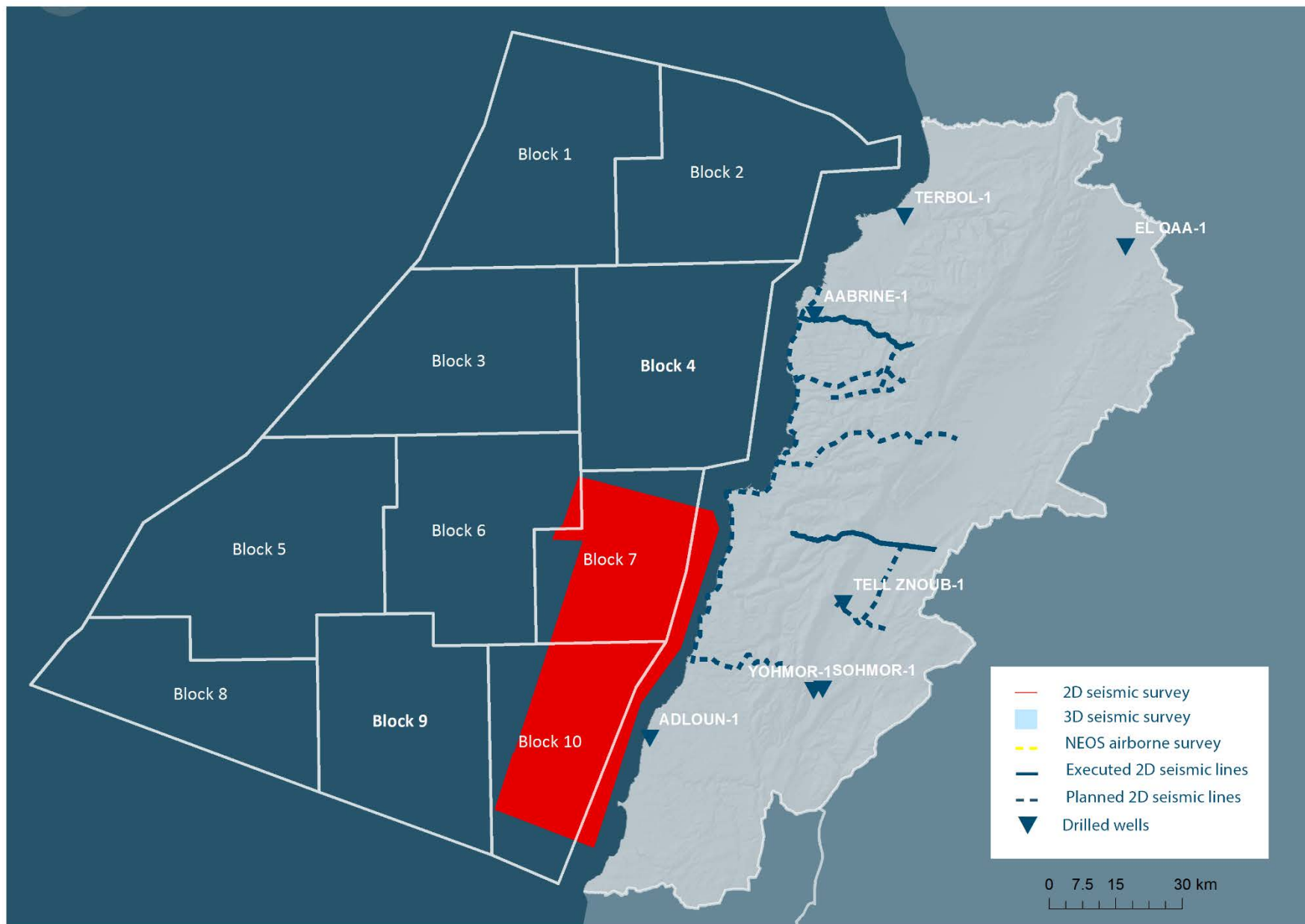
PGS 3D seismic survey – 2011 (1,364.5 km²)



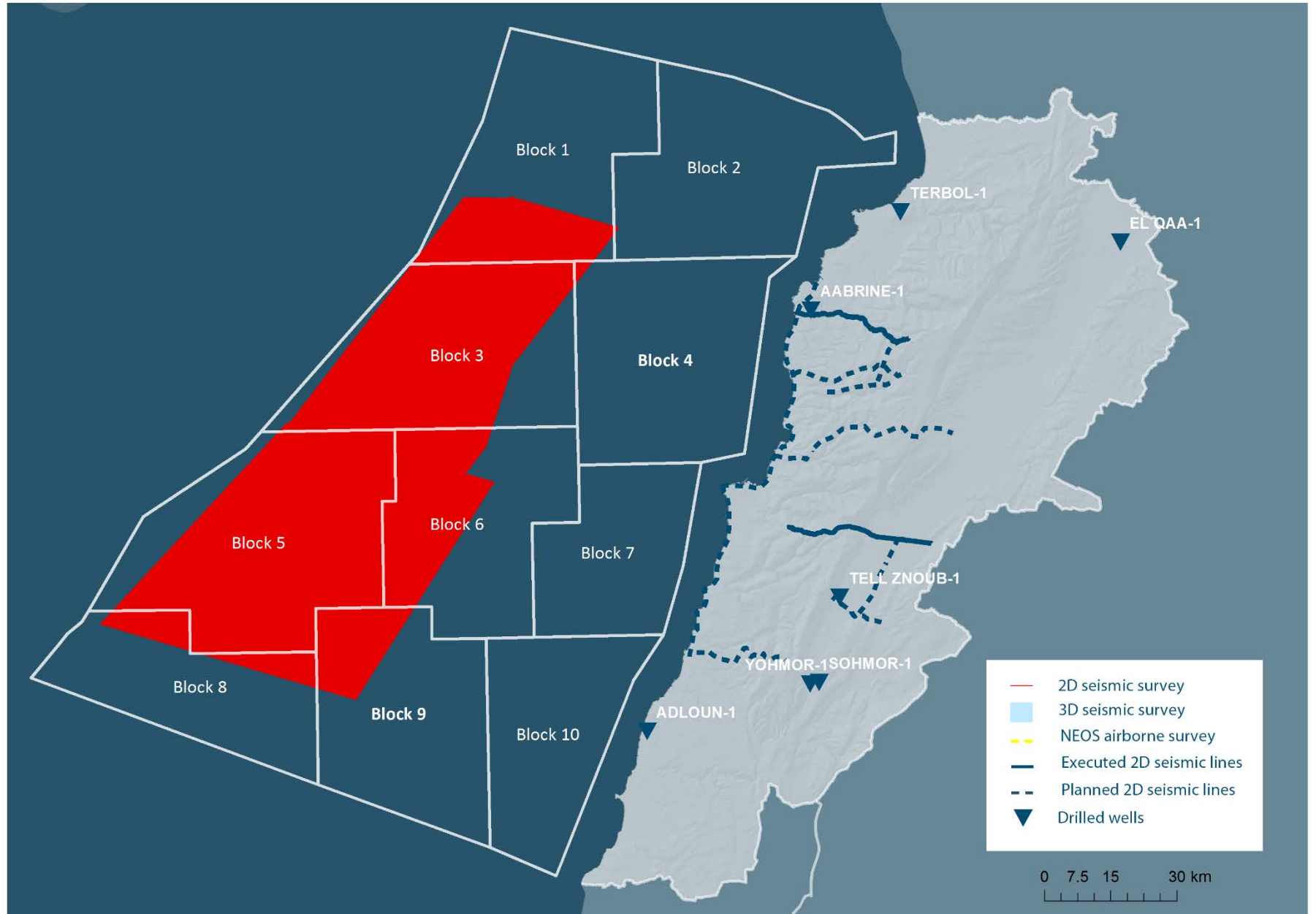
PGS 3D seismic survey – 2012 (3,864.8 km²)



PGS 3D seismic survey – 2013 (2,466.6 km²)



Spectrum 3D seismic survey – 2013 (5,330.2 km²)



Airborne survey – 2014 (6000 km²)

